

## 1. Install Hub-central processing unit



Place the battery in the casing.



Connect to your own internet router by internet cable. (Wi-Fi access point)



Switch on the device by plugging in the power cable.



The green LED light on the front will lit up when the Hub has connected to the Kotivartija-server.

## 2. Register the Kotivartija system



Go to the website [www.kotivartija.fi/rekisterointi](http://www.kotivartija.fi/rekisterointi)



Registration is done by entering your information and the eight digit serial number at the bottom of the central unit. (S/N)



Sign the service contract electronically by using your online banking codes.

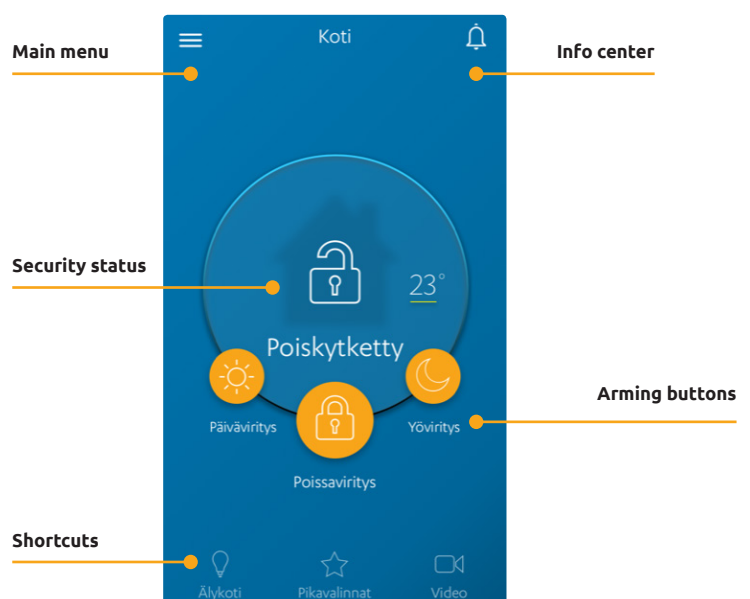
## 3. Download the Kotivartija application

With the Kotivartija application you can monitor and control the system from everywhere.

Kotivartija can be downloaded as an iOS or Android app from the AppStore or Google Play.

The app pin code is 1234 when you first open the application.

You can change the PIN code in the app settings.



## 4. Install devices

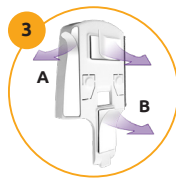
### Install the motion detector



Remove the back cover of the device.



Place batteries in the device.



Remove necessary tape covers before installation.

A. Installing on corner  
B. Installing on flat wall



Press the back lid against the wall or corner. Push the device into place in the fastened back lid.

### Location:

- Installation height 2,1 m–2,3 m.
- Clean, dry and even wall surface or corner in the room.
- Not against direct sunlight or powerful light source.
- Effective visibility area 6 meters.

### Install door/window detector



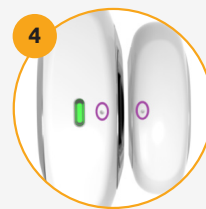
Open the detector and install battery.



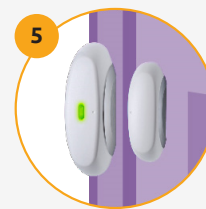
Remove cover tape.



Place the smaller unit on the door/window and the bigger one on the frame.

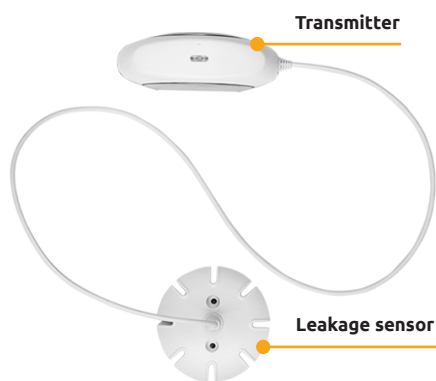


Place the points on the units on the same level against each other.



The LED indicator light shows function of the detector (green/red)

### Install the leakage indicator



### Choose location for the product and note the following recommendations:

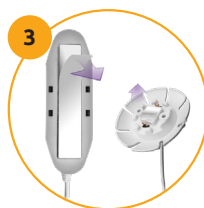
- Choose a location where the risk for leakage is great and it would cause major problems, e.g. close to a washing machine or dishwasher.
- An even and vertical surface for the transmitter.
- An even and horizontal surface for the leakage sensor.



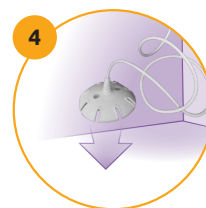
Remove the transmitter lid.



Place batteries in the transmitter.



Remove the cover tape from both parts.



Press to fasten the sensor in the floor.



Press to fasten the transmitter to a nearby wall or furniture.

